



## MGP168 Joint Sealant for Concrete

*Excellence in Polyurethane Chemistry*

**MGP168** is an Elastomeric Joint Filler manufactured by **Era Polymers**.

**MGP168** is a 2 part hybrid polyurea, is mainly used as a joint sealant in warehouses, factories and selected outside areas on industrial estates. It can also be used for spalled joint repair, random joint filling and patching.

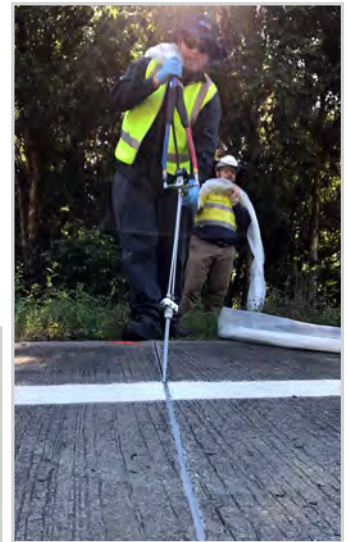
**MGP168** is a 1:1 parts by volume mixed elastomer, grey in colour, with a low viscosity for easy mixing. It adheres well to prepared concrete is fast curing which means it can be shaved shortly after gelling, and it is insensitive to moisture.

**MGP168** can also be applied in a number of ways through cartridges, mixed by hand or through a plural component machine, depending on your preference.

*So if you need a joint sealant that is easy to install and has a rapid cure, think **MGP168**.*

### MGP168

- FLEXIBILITY
- HIGH ELONGATION
- RAPID DEMOULD
- ECONOMICAL
- LOW VISCOSITY



### MDI

PROPERTIES	MGP168
Mix Ratio (A/B)	100/100
Working Life @ 25°C (mins)	4
Hardness (Shore A)	80 ± 5
Mixed Viscosity @ 25°C (cps)	1000

To more information on

**Era Polymers - MGP168 Elastomeric Joint Filler**

Call or Email:

Tel: +61 (0) 2 9666 3788

Email: [erapol@erapol.com.au](mailto:erapol@erapol.com.au)

[www.erapol.com.au](http://www.erapol.com.au)

Sydney • Adelaide • Brisbane • Melbourne • New Zealand • Singapore • Malaysia • United Kingdom • USA • South Africa

Era Polymers Pty Ltd

ABN 14 003 055 936

2 - 4 Green Street, Banksmeadow NSW, 2019, AUSTRALIA

Tel: +61 (0) 2 9666 3788